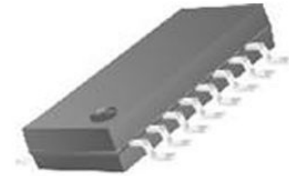


IC COMP W/REF LOWPWR QUAD 16SOIC

Manufacturers	Analog Devices, Inc
Package/Case	SOP16
Product Type	Voltage References ; Reference plus Comparator or Amplifier
RoHS	Pb-free Halide free
Lifecycle	



Images are for reference only

Please submit RFQ for LTC1445IS#PBF or [Email to us: sales@ovaga.com](mailto:sales@ovaga.com) We will contact you in 12 hours.

[RFQ](#)

General Description

The LTC1443/LTC1444/LTC1445 are ultralow power quad comparators with a built-in reference. The comparators feature less than 8.5 μ A supply current over temperature, an internal reference (1.182V \pm 1% for LTC1443 or 1.221V \pm 1% for LTC1444/LTC1445), programmable hysteresis (LTC1444/LTC1445) and TTL/CMOS output (LTC1443/ LTC1445) that sinks and sources current (open-drain output for LTC1444). The reference output can drive a bypass capacitor of up to 0.01 μ F without oscillation.

The comparators operate from a single 2V to 11V supply or a dual \pm 1V to \pm 5.5V supply (LTC1443). Comparator hysteresis is easily programmable using two resistors and the HYST pin (LTC1444/LTC1445). Each comparator's input operates from the negative supply to within 1.3V of the positive supply. The LTC1443/LTC1445 comparator output stage can continuously source up to 40mA. By eliminating the cross-conducting current that normally happens when the comparator changes logic states, power supply glitches are eliminated.

The LTC1443/LTC1444/LTC1445 are available in the 16-pin SO, PDIP and DFN packages.

Features

Ultralow Quiescent Current: 8.5 μ A Max

Reference Output Drives 0.01 μ F Capacitor

Adjustable Hysteresis (LTC1444/LTC1445)

Wide Supply Range Single: 2V to 11V Dual: \pm 1V to \pm 5.5V

Input Voltage Range Includes the Negative Supply

TTL/CMOS Compatible Outputs

Propagation Delay: 12 μ s (Typ) (10mV Overdrive)

No Crowbar Current

40mA Continuous Source Current

Pin Compatible Upgrades for MAX924 (LTC1443)

Low Profile (5mm \times 4mm \times 0.8mm) DFN Package

Application

Battery-Powered System Monitoring

Threshold Detectors

Window Comparators

Oscillator Circuits

Related Products



[LTC1042CN8](#)

Analog Devices, Inc
DIP8



[LT1017IS8#PBF](#)

Analog Devices, Inc
SOP8



[LT1720CS8](#)

Analog Devices, Inc
SOP8



[LTC1540CMS8](#)

Analog Devices, Inc
MSOP8



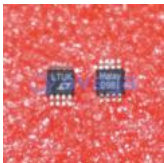
[LT1719CS8](#)

Analog Devices, Inc
SOP8



[LT1018CS8](#)

Analog Devices, Inc
SOP8



[LT1713IMS8](#)

Analog Devices, Inc
MSOP-8



[LTC1540CS8](#)

Analog Devices, Inc
SOIC8