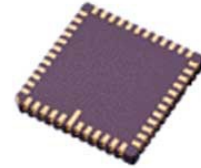


MEMS Gyroscope, Digital, Pitch, Roll, Yaw, $\pm 300^\circ/s$, 3 V, 5.25 V, LCC

Manufacturers	Analog Devices, Inc
Package/Case	LCCV-14
Product Type	Motion & Position Sensors
RoHS	Rohs
Lifecycle	



Images are for reference only

Please submit RFQ for ADXRS450BEYZ or [Email to us: sales@ovaga.com](mailto:sales@ovaga.com) We will contact you in 12 hours.

[RFQ](#)

General Description

The ADXRS450 uses an internal, continuous self-test architecture. The integrity of the electromechanical system is checked by applying a high frequency electrostatic force to the sense structure to generate a rate signal that can be differentiated from the baseband rate data and internally analyzed.

The ADXRS450 is capable of sensing angular rate of up to $\pm 300^\circ/\text{sec}$. Angular rate data is presented as a 16-bit word, as part of a 32-bit SPI message.

The ADXRS450 is available in a cavity plastic 16-lead SOIC (SOIC_CAV) and an SMT-compatible vertical mount package (LCC_V), and is capable of operating across both a wide voltage range (3.3 V to 5 V) and temperature range (-40°C to $+105^\circ\text{C}$).

Applications

Rotation sensing medical applications

Rotation sensing industrial and instrumentation

High performance platform stabilization

Features

Complete rate gyroscope on a single chip

High vibration rejection over a wide frequency range

Excellent 25°/hour null offset stability

Internally temperature compensated

2000 g powered shock survivability

SPI digital output with 16-bit data-word

Low noise and low power

3.3 V and 5 V operation

Ultra small, light, and RoHS compliant

Two package options:-- Low cost SOIC_CAV package for yaw rate (Z-axis) response-- Innovative ceramic vertical mount package, which can be oriented for pitch, roll, or yaw response

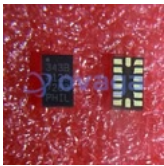
Application

Rotation sensing medical applications

Rotation sensing industrial and instrumentation

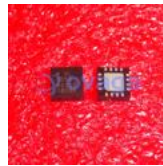
High performance platform stabilization

Related Products



[ADXL343BCCZ](#)

Analog Devices, Inc
LGA-14



[ADXL335BCPZ-RL7](#)

Analog Devices, Inc
LFCSP16



[ADXL103CE](#)

Analog Devices, Inc
CLCC-8



[ADIS16488BMLZ](#)

Analog Devices, Inc
MSM24



[ADXRS642BBGZ](#)

Analog Devices, Inc
CBGA-32



[ADXL357BEZ](#)

Analog Devices, Inc
LCC-14



[ADXL346ACCZ-RL7](#)

Analog Devices, Inc
LGA16



[ADXL345BCCZ-RL7](#)

Analog Devices, Inc
LGA-14