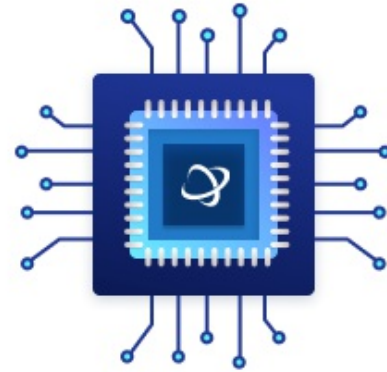


16-bit I2C and SMBus I/O port with interrupt

Manufacturers	<a href="#">NXP Semiconductor</a>
Package/Case	
Product Type	Logic ICs
RoHS	
Lifecycle	



Images are for reference only

Please submit RFQ for PCA9555BS or [Email to us: sales@ovaga.com](mailto:sales@ovaga.com) We will contact you in 12 hours.

[RFQ](#)

## General Description

PCA9555BS is an integrated circuit (IC) that belongs to the family of I/O expanders. Specifically, it is an 16-bit I/O expander with I2C-bus/SMBus interface.

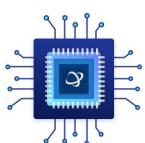
### Features

- 16-bit I/O expander with interrupt output
- 400 kHz Fast-mode Plus I2C-bus/SMBus interface
- Active LOW interrupt output
- Internal power-on reset
- No glitch on power-up
- Low standby current
- 5 V tolerant I/Os

### Application

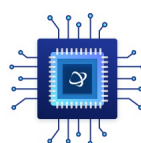
- Automotive applications (e.g. body electronics, climate control, lighting)
- Industrial control and automation (e.g. process control, robotics, instrumentation)
- Medical equipment (e.g. patient monitoring, diagnostic equipment)
- Consumer electronics (e.g. audio/video equipment, home automation)

### Related Products



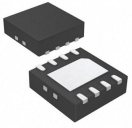
[PCA9698BS](#)

NXP Semiconductor



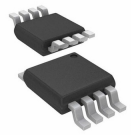
[PCA9701PW](#)

NXP Semiconductor



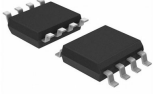
[PCA9306GF,115](#)

NXP Semiconductor  
XSON-8



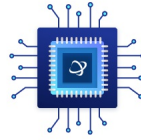
[PCA9306DC1,125](#)

NXP Semiconductor  
VSSOP-8



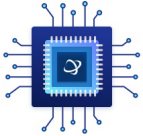
[PCA9306D,118](#)

NXP Semiconductor  
SO-8



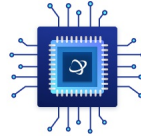
[PCA9515ADP](#)

NXP Semiconductor



[PCA9517AD](#)

NXP Semiconductor



[PCA9547PW](#)

NXP Semiconductor