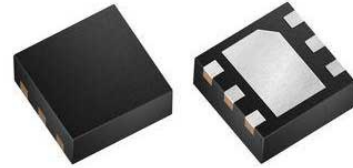


Step Down DC-DC Converter 6-Pin, DFN

Manufacturers	Analog Devices, Inc
Package/Case	DFN-6
Product Type	Power Management ICs
RoHS	Pb-free Halide free
Lifecycle	



Images are for reference only

Please submit RFQ for LT3503EDCB#TRMPBF or [Email to us: sales@ovaga.com](mailto:sales@ovaga.com) We will contact you in 12 hours.

[RFQ](#)

General Description

The LT3503 is a current mode PWM step-down DC/DC converter with an internal 1.45A power switch. The wide operating input range of 3.6V to 20V makes the LT3503 ideal for regulating power from a wide variety of sources. Its high operating frequency allows the use of tiny, low cost inductors and ceramic capacitors, resulting in low, predictable output ripple.

Cycle-by-cycle current limit provides protection against shorted outputs and soft-start eliminates input current surge during start-up. The low current (<math><2\mu\text{A}</math>) shutdown mode provides output disconnect, enabling easy power management in battery-powered systems.

Features

Wide Input Range: 3.6V to 20V

5V at 1.2A from 11V to 18V Input

5V at 1A from 7.2V to 18V Input

3.3V at 1.2A from 8.5V to 12V Input

3.3V at 1A from 5.5V to 12V Input

Fixed Frequency Operation: 2.2MHz

Output Adjustable Down to 780mV

Short-Circuit Robust

Uses Tiny Capacitors and Inductors

Soft-Start

Internally Compensated

Low Shutdown Current: $<2\mu\text{A}$

Low VCESAT Switch: 400mV at 1A

Thermally Enhanced, 2mm \times 3mm 6-Pin DFN Low Profile Package

Application

Automotive Battery Regulation

Industrial Control Supplies

Wall Transformer Regulation

Distributed Supply Regulation

Battery-Powered Equipment

Related Products



[LT3763EFE](#)

Analog Devices, Inc
TSSOP28



[LT1038CK](#)

Analog Devices, Inc
TO-3



[LTC4417IUF](#)

Analog Devices, Inc
QFN-24



[LTC3440EMS](#)

Analog Devices, Inc
MSOP10



[LTC1966CMS8#PBF](#)

Analog Devices, Inc
MSOP-8P



[LTC2990IMS#PBF](#)

Analog Devices, Inc
10MSOP



[LTM8045EY#PBF](#)

Analog Devices, Inc
BGA40



[LT4295IUFD#PBF](#)

Analog Devices, Inc
28-WFQFN