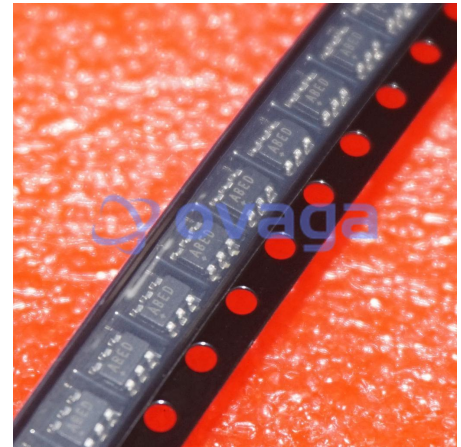


MS/STANDARD CYLINDRICAL MIL-C-5015 TYPE CONNECTORS, STRAIGHT BODY STYLE, SOLDER TERMINATION, 14S SHELL SIZE, 14S-6 INSERT ARRANGEMENT, PLUG GENDER, 6 CONTACTS

Manufacturers	Analog Devices, Inc
Package/Case	SOT-23-6
Product Type	Power Management ICs
RoHS	
Lifecycle	



Images are for reference only

Please submit RFQ for MAX5048BAUT-T or [Email to us: sales@ovaga.com](mailto:sales@ovaga.com) We will contact you in 12 hours.

[RFQ](#)

General Description

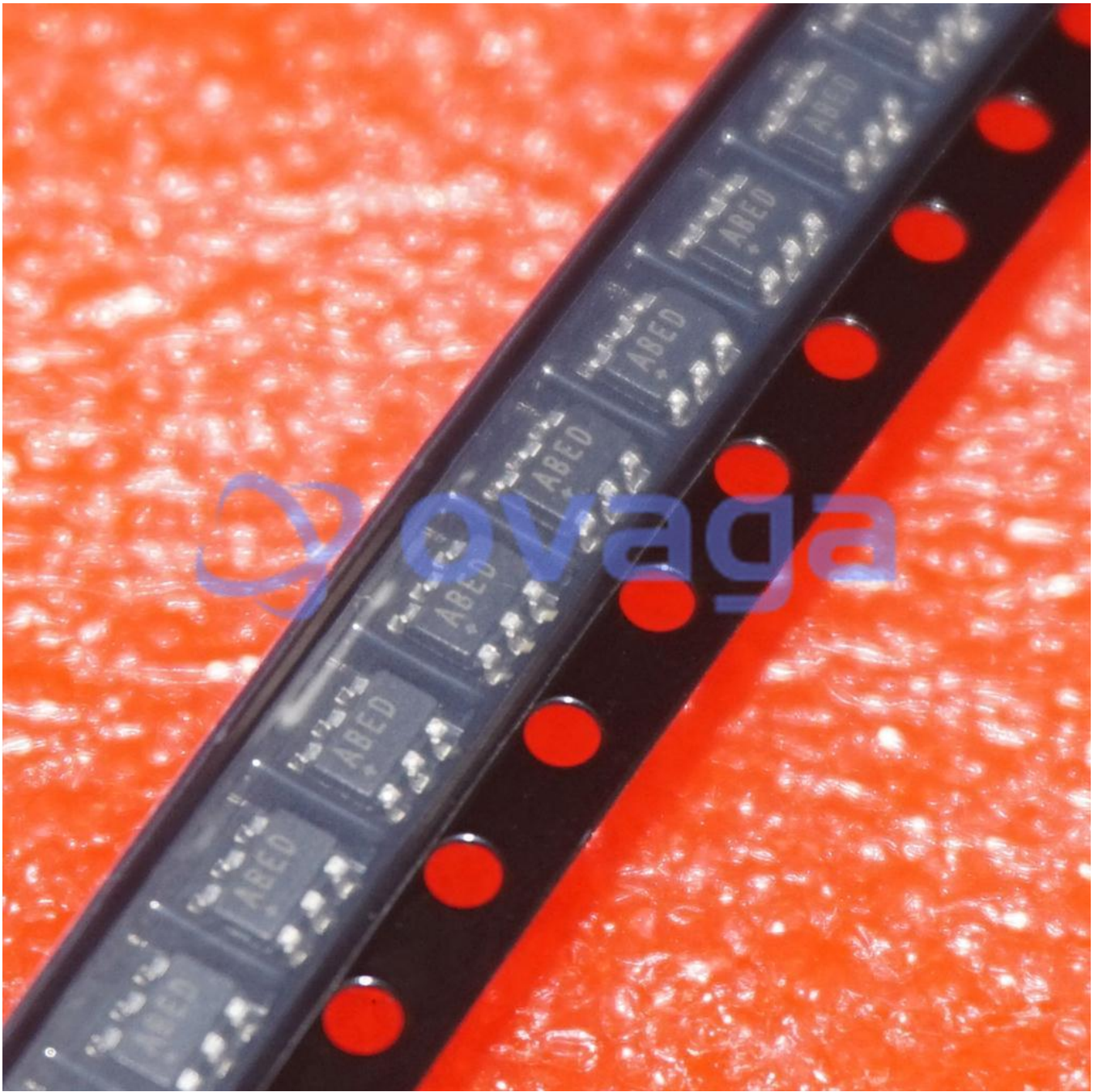
MAX5048BAUT-T is a voltage-mode PWM controller IC (integrated circuit) manufactured by Maxim Integrated. Its primary function is to regulate the output voltage of a DC-DC converter by controlling the duty cycle of the switching transistor.

Features

- Wide input voltage range: 4.5V to 28V
- Adjustable switching frequency: 50kHz to 1MHz
- Internal soft-start and frequency compensation
- Overvoltage, undervoltage, and overcurrent protection
- Adjustable output voltage up to 95% of the input voltage
- Small 6-pin SOT23 package

Application

- Power supplies for industrial and automotive systems
- Battery-powered devices
- Distributed power systems
- Point-of-load converters
- LED lighting applications



Related Products



[MAX813L](#)

Analog Devices, Inc



[MAX8869EUE33](#)

Analog Devices, Inc
TSSOP-16



[MAX7219CWG+T](#)

Analog Devices, Inc
SOIC-24



[MAX1951ESA](#)

Analog Devices, Inc
SOIC-8



[MAX811SEUS+T](#)

Analog Devices, Inc
SOT-4



[MAX1708EEE](#)

Analog Devices, Inc
QSOP-16



[MAX8556ETE](#)

Analog Devices, Inc
TQFN-16



[MAX618EEE](#)

Analog Devices, Inc
QSOP-16