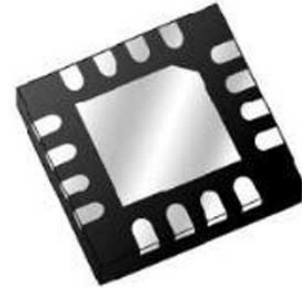


10 GHz LATCHED COMPARATOR WITH RSPECL OUTPUT STAGE

Manufacturers	Analog Devices, Inc
Package/Case	QFN16
Product Type	Comparator ICs
RoHS	Pb-free Halide free
Lifecycle	



Images are for reference only

Please submit RFQ for HMC674LP3E or [Email to us: sales@ovaga.com](mailto:sales@ovaga.com) We will contact you in 12 hours.

[RFQ](#)

General Description

The HMC674LP3E are silicon germanium (SiGe), monolithic, ultrafast comparators that feature reduced swing positive emitter-coupled logic (RSPECL) output drivers and latch inputs. These comparators support 10 Gbps operation and provide 85 ps propagation delay and an input signal minimum pulse width of 60 ps with 0.2 ps rms of random jitter (RJ). Overdrive and slew rate dispersion is typically 10 ps, making the HMC674LP3E ideal for a wide range of applications from ATE to broadband communications. The RSPECL output stages directly drive 400 mV into a 50 Ω resistor terminated to >

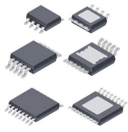
Features

- Equivalent input bandwidth: 9.3 GHz typical
- Propagation delay: 85 ps typical
- Overdrive and slew rate dispersion: 10 ps typical
- Input signal minimum pulse width: 60 ps typical
- Resistor programmable hysteresis
- Differential latch control
- Power dissipation: 140 mW typical
- 16-terminal, 3 mm × 3 mm, ceramic leadless chip carrier (LCC)
- 16-lead lead frame chip scale package (LFCSP)

Application

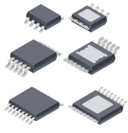
- Automatic test equipment (ATE) applications
- High speed instrumentation
- Digital receiver systems
- Pulse spectroscopy
- High speed trigger circuits
- Clock and data restoration

Related Products



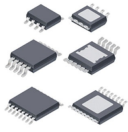
[LT1715HMS](#)

Analog Devices, Inc
MSOP



[LT1715HMS#PBF](#)

Analog Devices, Inc
MSOP-1



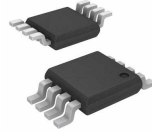
[LTC6957HMS-2#PBF](#)

Analog Devices, Inc
12-Lead MSOP



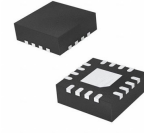
[LT1715HMS#TRPBF](#)

Analog Devices, Inc
MSOP10



[LTC6752HMS8-2#PBF](#)

Analog Devices, Inc
8-Lead MSOP



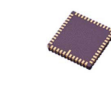
[HMC675LP3E](#)

Analog Devices, Inc
16-VFQFN



[LTC6752HMS8-2#TRPBF](#)

Analog Devices, Inc
8-Lead MSOP



[HMC974LC3CTR-R5](#)

Analog Devices, Inc
16-Lead LCC (3mm x 3mm w/ EP)