

Conv DC-DC 2.5V to 5.5V Step Up Single-Out 2.5V to 20V 4A 10-Pin LFCSP EP T/R

Manufacturers	Analog Devices, Inc
Package/Case	LFCSP-10
Product Type	Power Management ICs
RoHS	Rohs
Lifecycle	

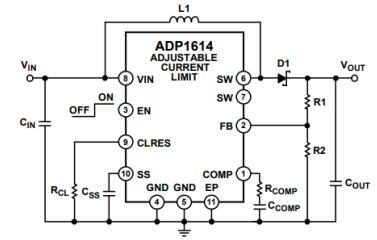


Figure 1. Step-Up Regulator Configuration for Adjustable Current-Limit Options

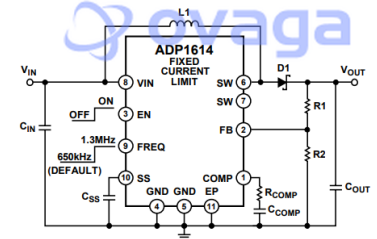


Figure 2. Step-Up Regulator Configuration for Fixed Current-Limit Options

Images are for reference only

Please submit RFQ for ADP1614ACPZ-1.3-R7 or [Email to us: sales@ovaga.com](mailto:sales@ovaga.com) We will contact you in 12 hours.

[RFQ](#)

General Description

The ADP1614 operates in current-mode pulse-width modulation (PWM) with up to 94% efficiency. Adjustable soft start prevents inrush currents when the part is enabled. The PWM current-mode architecture allows excellent transient response, easy noise filtering, and the use of small, cost-saving external inductors and capacitors. Other key features include undervoltage lockout (UVLO), thermal shutdown (TSD), and logic controlled enable.

The ADP1614 is available in Pb-free, 10-lead lead frame chip scale package (LFCSP).

Applications

TFT LCD bias supplies

Portable applications

Industrial/instrumentation equipment

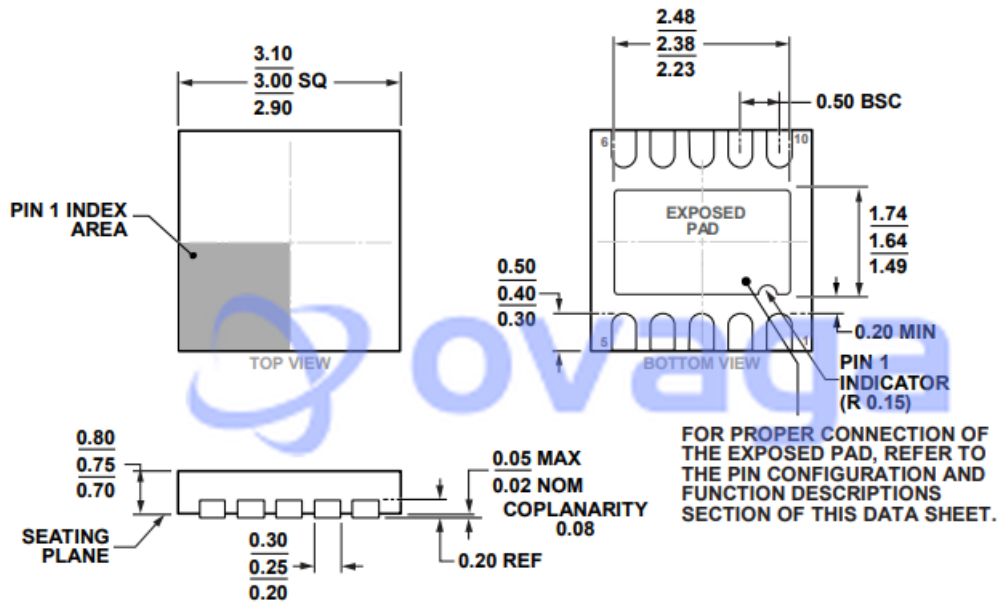


Figure 37. 10-Lead Lead Frame Chip Scale Package [LFCSP_WD]
 3 mm x 3 mm Body, Very Very Thin, Dual Lead
 (CP-10-9)
 Dimensions shown in millimeters

Related Products



[ADP3336ARMZ-REEL7](#)

Analog Devices, Inc
 MSOP-8



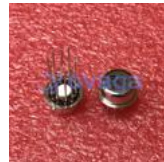
[AD737JRZ](#)

Analog Devices, Inc
 SOP-8



[ADP3367ARZ](#)

Analog Devices, Inc
 SOIC-8



[AD636JH](#)

Analog Devices, Inc
 TO-100-10



[ADP3330ARTZ3.3-RL7](#)

Analog Devices, Inc
 SOT-23-6



[ADR434BRZ](#)

Analog Devices, Inc
 SOIC-8



[ADR421ARZ](#)

Analog Devices, Inc
 SOP-8



[ADR3412ARJZ-R7](#)

Analog Devices, Inc
 SOT-23-6