

Video/Imaging Fixed-Point Digital Signal Processor 548-FC/CSP

Manufacturers	Analog Devices, Inc
Package/Case	SOIC-16
Product Type	Interface ICs
RoHS	
Lifecycle	



Images are for reference only

Please submit RFQ for MAX3096ESE or [Email to us: sales@ovaga.com](mailto:sales@ovaga.com) We will contact you in 12 hours.

[RFQ](#)

General Description

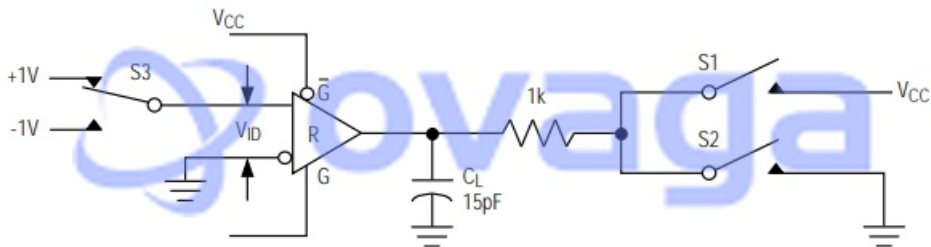
MAX3096ESE is a high-speed, low-power, and low-jitter transceiver designed for use in RS-422 and RS-485 communication systems. It is manufactured by Maxim Integrated.

Features

- High data rate of up to 40 Mbps
- Low power consumption of 4.3 mA typical
- Low output skew of 1 ns typical
- Wide common-mode input voltage range of ± 12 V
- Thermal shutdown protection
- Driver/receiver enable for power management
- 8 kV ESD protection on RS-485 inputs and outputs

Application

- Industrial automation and control systems
- Motor control and robotics
- Instrumentation and measurement equipment
- Building automation and security systems
- HVAC control systems
- Medical equipment
- Telecommunications and networking equipment



Related Products



[MAX3232EEEU](#)
Analog Devices, Inc
TSSOP-16



[MAX4544EUT+T](#)
Analog Devices, Inc
SOT-23-6



[MAX202CSE](#)
Analog Devices, Inc
SOP-16

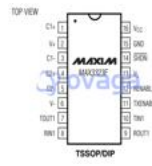


[MAX485ECPA](#)
Analog Devices, Inc
DIP-8



[MAX3221EEUE](#)

Analog Devices, Inc
TSSOP-16



[MAX3223EEUE](#)

Analog Devices, Inc
TSSOP-16



[MAX490MJA](#)

Analog Devices, Inc
CDIP-8



[MAX3232EUE](#)

Analog Devices, Inc
TSSOP-16